

# H3600

Stainless steel  
angle seat valve  
long service fast response



## Application

### Applicable Industries:

Beer, Washing, Disinfection & High temperature killing bacteria, Rubber machinery, Textile printing and dyeing, Pharmacy and medical equipment, Foodstuff processing, Water/ sewage disposal, Filling equipment.

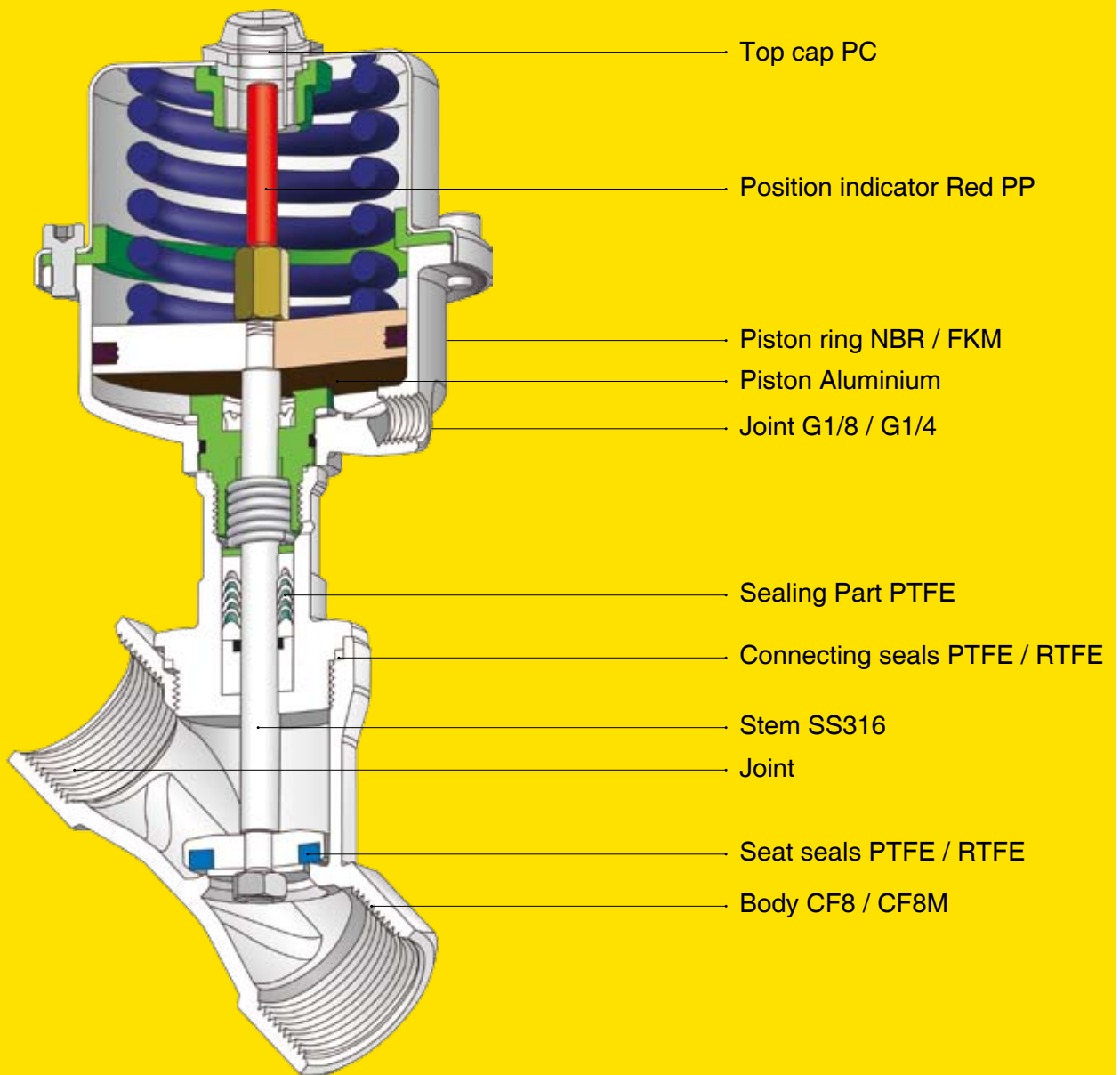
### Applicable Medium:

water, liquid, neutral gas, water steam, slight corrosive gas and liquid.

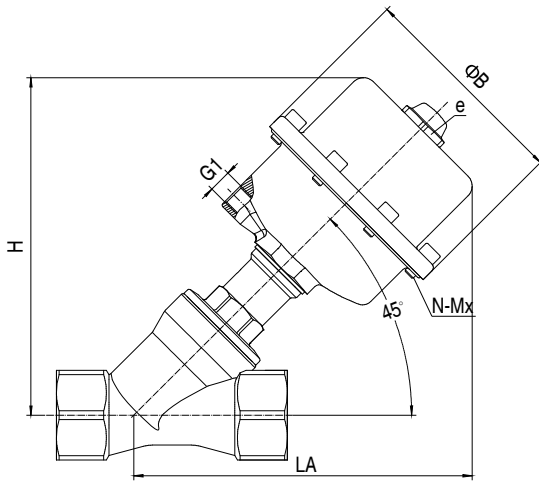
## Technical Data

<b>Joint size:</b>	DN10-DN65
<b>Thread:</b>	BSP, BSPT.NPT, NPTF
<b>Welded:</b>	ISO1127/4200, DIN11850.1, DIN11850.2 DIN11850.3, SMS3008, ASME BPE
<b>Valve body:</b>	CF8/CF8M
<b>Actuator:</b>	CF8
<b>Seat seals:</b>	PTFE/RTFE
<b>Stem seals:</b>	PTFE/FKM
<b>Piston seals:</b>	FKM/NBR
<b>Applicable medium:</b>	Water, liquid, neutral gas, Water steam, Slight corrosive gas and liquid
<b>Temperature range:</b>	-10°C to +180°C
<b>Ambient temperature:</b>	-10°C to +60°C
<b>Viscosity:</b>	max 600mm <sup>2</sup> /s
<b>Installation:</b>	Any position
<b>Controlling medium:</b>	Air or neutral gas
<b>Controlling pressure range:</b>	0.3-1Mpa

# H3600



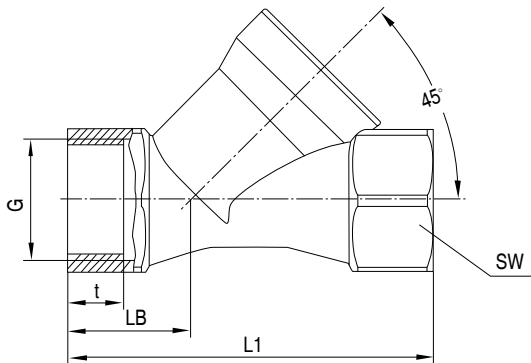
## Installation Dimensions



## Installation size (mm)

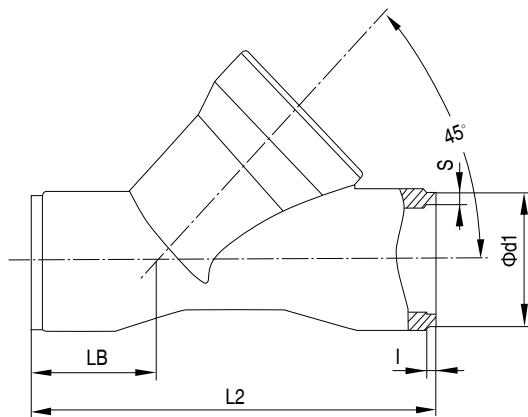
Size	Actuator	ΦB	G1	e	N-Mx	H/LA		
						Thread	Welded ISO1127/4200	Welded DIN11850
DN10	50	71	G1/8	M16×1.5	6-M4	121	122	122
DN15	50	71	G1/8	M16×1.5	6-M4	121	121	121
DN20	50	71	G1/8	M16×1.5	6-M4	123	123	123
	70	94	G1/8	M16×1.5	8-M5	141	141	141
DN25	50	71	G1/8	M16×1.5	6-M4	130	130	130
	70	94	G1/8	M16×1.5	8-M5	148	148	148
DN32	70	94	G1/8	M16×1.5	8-M5	157	157	157
	100	132	G1/4	M22×1.5	8-M6	192	192	192
DN40	70	94	G1/8	M16×1.5	8-M5	164	164	164
	100	132	G1/4	M22×1.5	8-M6	202	202	202
	125	160	G1/4	M22×1.5	14-M6	228	228	228
DN50	70	94	G1/8	M16×1.5	8-M5	174	174	174
	100	132	G1/4	M22×1.5	8-M6	212	212	212
	125	160	G1/4	M22×1.5	14-M6	238	238	238
DN65	100	132	G1/4	M22×1.5	8-M6	239	239	239
	125	160	G1/4	M22×1.5	14-M6	271	271	271

## Valve Body Size



## Body size-Thread (mm)

DN	L1	LB	SW			G	BSP	NPT	NPTF	BSPT
			t	t	t		t	t	t	t
10	74	25.5	22	6-kt	3/8"	10	10.6	11.7	10.1	
15	74	25.5	25	6-kt	1/2"	11.5	13.8	15.4	13.2	
20	84	29	31	6-kt	3/4"	14	14.3	15.9	14.5	
25	100	33.5	39	6-kt	1"	15	17	19	16.8	
32	112	36	50	8-kt	1-1/4"	18	17.5	19.5	19.1	
40	126	41	56	8-kt	1-1/2"	18	17.5	19.5	19.1	
50	146	46	68	8-kt	2"	22	18	19.9	23.4	
65	196	61	85	8-kt	2-1/2"	25	24	30	26.7	



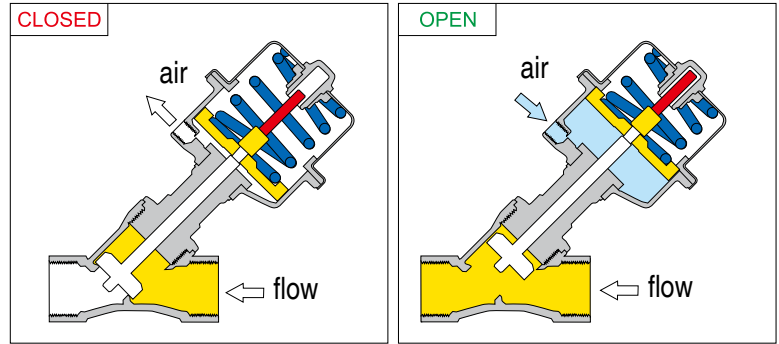
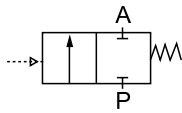
## Body size-Welded (mm)

DN	L2	LB	ISO1127/4200			DIN11850.1			DIN11850.2			DIN11850.3		
			l	Φd1	s	l	Φd1	s	l	Φd1	s	l	Φd1	s
10	70	22	2	17.2	1.6	2	12	1	2	13	1.5	2	14	2
15	88	30	2	21.3	1.6	2	18	1	2	19	1.5	2	20	2
20	92	30	2.5	26.9	1.6	2.5	22	1	2.5	23	1.5	2.5	24	2
25	110	35	3	33.7	2	3	28	1	3	29	1.5	3	30	2
32	126	39	3	42.4	2	3	34	1	3	35	1.5	3	36	2
40	144	46	3	48.3	2	3	40	1	3	41	1.5	3	42	2
50	166	48	3	60.3	2	3	52	1	3	53	1.5	3	54	2
65	208	60	3	76.1	2	-	-	-	3	70	2	-	-	-

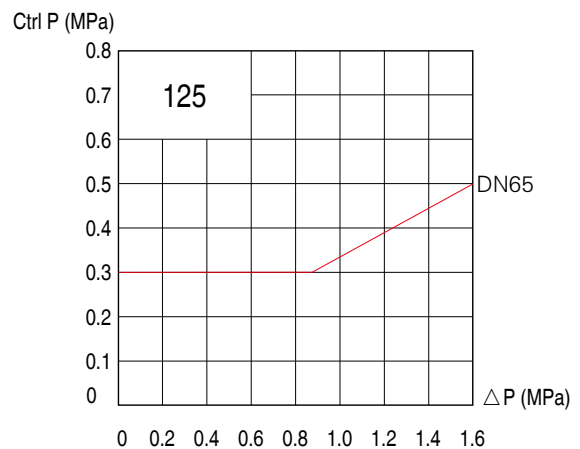
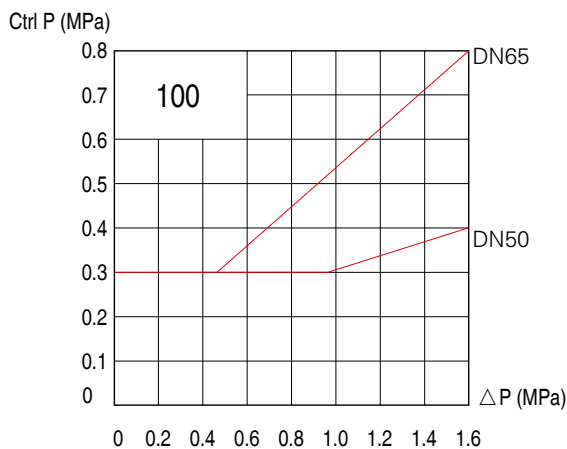
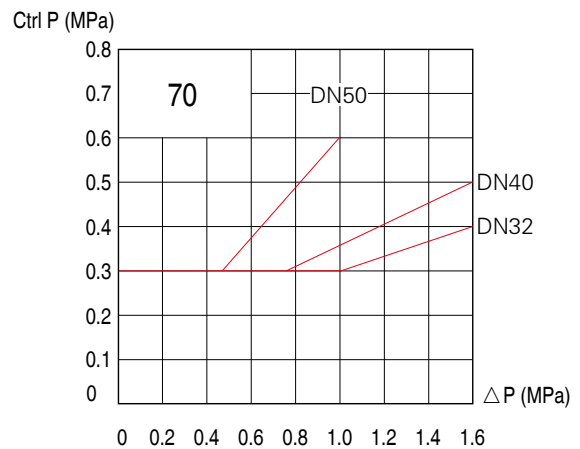
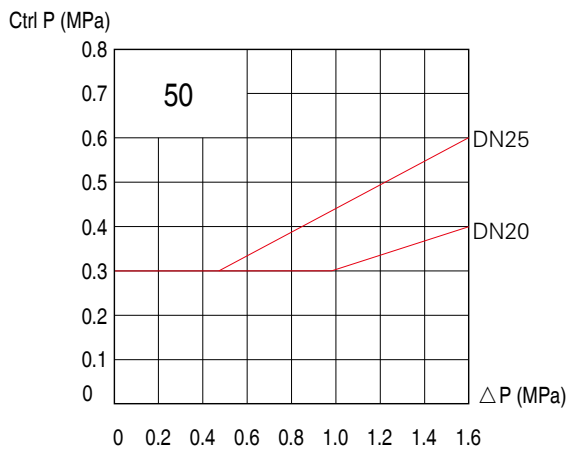
DN	L2	LB	SMS 3008			ASME BPE			The technical data is the same with below sizes of any other welded standard
			l	Φd1	s	l	Φd1	s	
15	70	22	2.5	12	1	2.5	12.7	1.65	DN10
20	88	30	2	18	1	2	19.05	1.65	DN15
25	92	30	2.5	25	1.2	2.5	25.4	1.65	DN20
40	126	39	3	38	1.2	3	38.1	1.65	DN32
50	144	46	3	51	1.2	3	50.8	1.65	DN40
65	166	48	3	63.5	1.6	3	63.5	1.65	DN50
80	208	60	3	76.1	1.6	3	76.2	1.65	DN65

# H3600 Spring return normal close (Normal type)

Normal close with flow direction

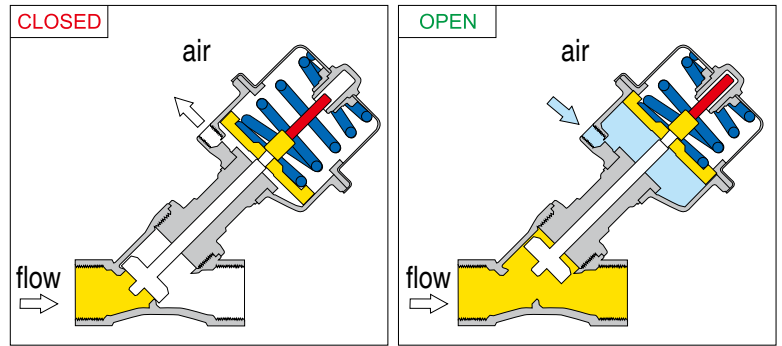
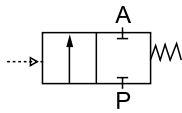


Size	End	Orifice (mm)	Actuator (mm)	Kv (m³/h)	Max working pressure at 180°C (Mpa)	Pressure range (Mpa)	Min control pressure (Mpa)	
DN10	3/8"	13	50	4.7	1.6	0-1.6	≥ 0.3	
DN15	3/8"	13	50	4.7		0-1.6	≥ 0.3	
DN20	3/4"	18	50	9.5		0-1.6	0.3-0.4	
DN25	1"	24	50	18.1		0-1.6	≥ 0.3	
			70	18.1		0-1.6	0.3-0.4	
DN32	1-1/4"	31	70	23.1		0-1.6	≥ 0.3	
			100	23.1		0-1.6	0.3-0.5	
DN40	1-1/2"	35	70	32.9		0-1.6	≥ 0.3	
			100	32.9		0-1.6	0.3-0.6	
DN50	2"	45	70	52.8		0-1.0	≥ 0.3	
			100	52.8		0-1.6	0.3-0.4	
DN65	2-1/2"	65	100	82		0-1.6	≥ 0.3	
			125	82		0-1.6	0.3-0.8	
							0-1.6	0.3-0.5



## H3600 Spring return normal close (Anti-water hammer)

Normal close against flow direction



Size	End	Orifice (mm)	Actuator (mm)	Kv (m <sup>3</sup> /h)	Max working pressure at 180°C (Mpa)	Pressure range (Mpa)	Min control pressure (Mpa)
DN10	3/8"	13	50	4.7	1.6	0-1.6	0.4
DN15	1/2"	13	50	4.7		0-1.6	0.4
DN20	3/4"	18	50	9.5		0-1.0	0.4
			70	9.5		0-1.6	0.4
DN25	1"	24	70	18.1		0-1.4	0.4
DN32	1-1/4"	31	70	23.1		0-0.7	0.4
			100	23.1		0-1.6	0.4
DN40	1-1/2"	35	100	32.9		0-1.6	0.4
			125	32.9		0-1.6	0.45
DN50	2"	45	100	52.8		0-0.9	0.4
			125	52.8		0-1.6	0.45
DN65	2-1/2"	65	125	82		0-0.8	0.45