

CE  
ISO9001:2000

# JAC Series 1000~5000

Air Filter Combination  
(F.R.L. Combination)



JAC2000-02



JAC3000-03

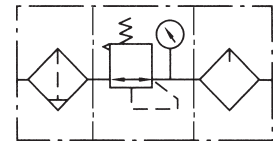
FRL

- AC, BC
- AFC, BFC
- AF, BF
- AR, BR
- AFR, BFR
- AL, BL
- JAC**
- JAF
- JAR
- JAW
- JAL
- PTH
- JAD

## Ordering Code

JA	C	4000	04	D	N
Series	Function	Specification	Port size	Drain Type	Wiring Form
JAC2000-02	F.R.L. Combination	1000 2000 2500	M5: M5 x 0.8 01: G 1/8" 02: G 1/4"	Blank: Semi-automatic D: Automatic	Blank: Standard N: Metal cup
JAC3000-03		3000 4000 5000	03: G 3/8" 04: G 1/2" 06: G 3/4" 10: G 1"		

## Symbol



## Specification

Model	JAC1000-M5	JAC2000-01	JAC2000-02	JAC2500-02	JAC2500-03	JAC3000-02	JAC3000-03	JAC4000-03	JAC4000-04	JAC4000-06	JAC5000-06	JAC5000-10	
Rated Flow	90	500	500	1500	1500	2000	2000	4000	4000	4500	5000	5000	
Port Size	M5	1/8	1/4	1/4	3/8	1/4	3/8	3/8	1/2	3/4	3/4	1	
Filter Precision	25 μm												
Max. Adjustable Pressure	1.0 MPa												
Ensured Pressure Resistance	1.5 MPa												
Operating Temperature Range	5 ~ 60 °C												
Range of Adjustable Pressure	0.05 ~ 0.7 MPa		0.05 ~ 0.85 MPa										
Suggested Lubricating oil	ISO VG 32												
Container Material	Poly Carbonate												
Protective Cup Cover	Not Available				Iron								
Drain Function	Differential Drain		Differential Drain, Automatic Drain										
Valve Type	With Overflow												
Assembly	Filter	JAF1000-M5	JAF2000-01	JAF2000-02	JAF3000-02	JAF3000-02	JAF3000-02	JAF3000-03	JAF4000-03	JAF4000-04	JAF4000-06	JAF5000-06	JAF5000-10
	Regulator	JAR1000-M5	JAR2000-01	JAR2000-02	JAF2500-02	JAF2500-02	JAR3000-02	JAR3000-03	JAR4000-03	JAR4000-04	JAR4000-06	JAR5000-06	JAR5000-10
	Lubricator	JAL1000-M5	JAL2000-01	JAL2000-02	JAL3000-02	JAL3000-02	JAL3000-02	JAL3000-03	JAL4000-03	JAL4000-04	JAL4000-06	JAL5000-06	JAL5000-10

# JAC Series 1010~5010

Air Filter Combination  
(F.R.L. Combination)



The way to automation

## FRL

- AC, BC
- AFC, BFC
- AF, BF
- AR, BR
- AFR, BFR
- AL, BL
- JAC**
- JAF
- JAR
- JAW
- JAL
- PTH
- JAD



JAC3010-03N






JAC2000

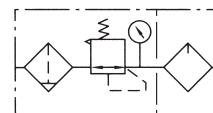


JAC4000

## Ordering Code

JA	C	4010	04	D	N
Series	Function	Specification	Port size	Drain Type	Wiring Form
JAC2010-02 	F.R.L. Combination	1010	M5: M5 x 0.8	Blank: Semi-automatic D: Automatic	Blank: Standard N: Metal cup
JAC3010-03 		2010	01: G 1/8"		
		3010	02: G 1/4"		
		4010	03: G 3/8"		
JAC3010-03N 		5010	04: G 1/2"		
			06: G 3/4"		
		10: G 1"			

## Symbol



## Specification

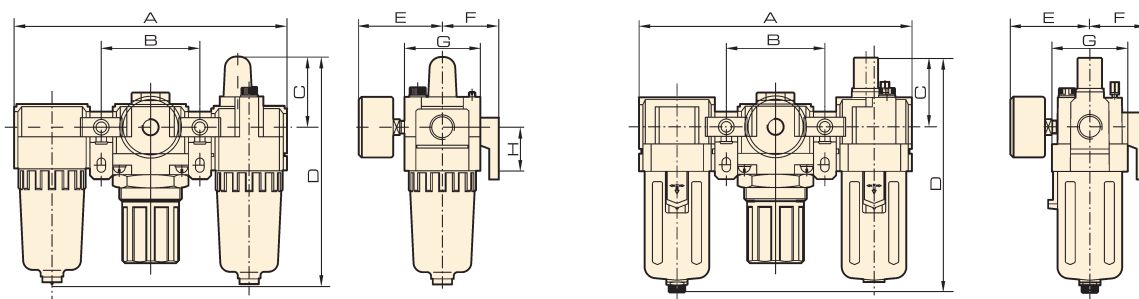
Model	JAC1010-M5	JAC2010-01	JAC2010-02	JAC3010-02	JAC3010-03	JAC4010-03	JAC4010-04	JAC4010-06	JAC5010-06	JAC5010-10	
Rated Flow	90	500	500	1700	1700	3000	3000	3000	4000	4000	
Port Size	M5	1/8	1/4	1/4	3/8	3/8	1/2	3/4	3/4	1	
Filter Precision	25 μm										
Max. Adjustable Pressure	1.0 MPa										
Ensured Pressure Resistance	1.5 MPa										
Operating Temperature Range	5 ~ 60 °C										
Range of Adjustable Pressure	0.05 ~ 0.7 MPa			0.05 ~ 0.85 MPa							
Suggested Lubricating oil	ISO VG 32										
Container Material	Poly Carbonate										
Protective Cup Cover	Not Available					Iron					
Drain Function	Differential Drain		Differential Drain, Automatic Drain								
Valve Type	With Overflow										
Assembly	Filter Regulator	JAW1000-M5	JAW2000-01	JAW2000-02	JAW3000-02	JAW3000-03	JAW4000-03	JAW4000-04	JAW4000-06	JAW5000-06	JAW5000-10
	Lubricator	JAL1000-M5	JAL2000-01	JAL2000-02	JAL3000-02	JAL3000-03	JAL4000-03	JAL4000-04	JAL4000-06	JAL5000-06	JAL5000-10

## JAC Series 1000~5000

Air Filter Combination (F.R.L. Combination)

Overall Dimension

JAC1000 ~ JAC5000



Dimension

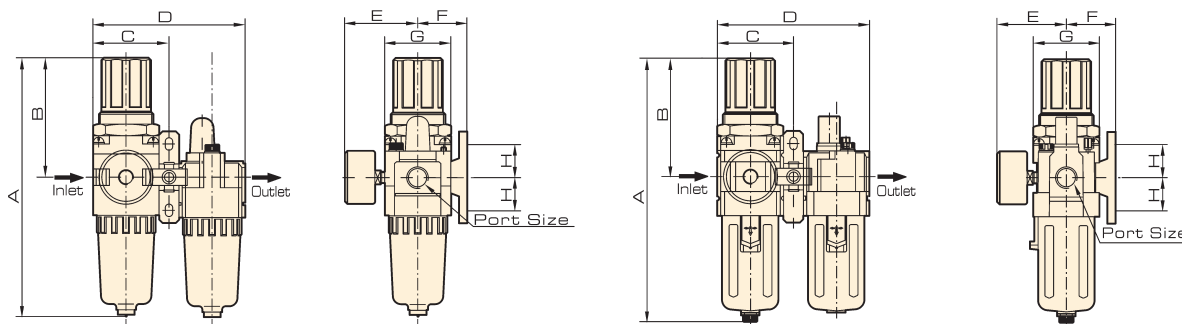
Model	Bore	A	B	C	D	E	F	G	H
JAC1000	M5	91	33	25.5	84.5	26	25	25	20
JAC2000	1/8 - 1/4	140	50	38	125	56.8	30	40	24
JAC2500	1/4 - 3/8	181	64	38	156.5	60.8	41	53	35
JAC3000	1/4 - 3/8	181	64	38	156.5	60.8	41	53	35
JAC4000	3/8 - 1/2	238	84	41	191.5	65.5	50	70	40
JAC4000-06	3/4	253	89	41	193	69.5	50	70	40
JAC5000	3/4 - 1	300	105	48	271.5	75.5	69.8	90	50

## JAC Series 1010~5010

Air Filter Combination (FR.L. Combination)

Overall Dimension

JAC1010 ~ JAC5010



Dimension

Model	Bore	A	B	C	D	E	F	G	H
JAC1010	M5	109.5	50.5	29	58	26	25	25	20
JAC2010	1/8 - 1/4	164.5	78	45	90	56.8	30	40	24
JAC3010	1/4 - 3/8	211	92.5	58.5	117	60.8	41	53	35
JAC4010	3/8 - 1/2	262	112	77	154	70.5	50	70	40
JAC4010-06	3/4	267	114	82	164	70.5	50	70	40
JAC5010	3/4 - 1	338	116	97.5	195	75.5	69.8	90	50

- FRL
- AC, BC
- AFC, BFC
- AF, BF
- AR, BR
- AFR, BFR
- AL, BL
- JAC**
- JAF
- JAR
- JAW
- JAL
- PTH
- JAD