

MVSD Series Solenoid Valve



The way to automation

- Valve
- 4V100
- 4V200
- 4V300
- 4V400
- Manifold
- 3V1
- JEL
- JZF
- MVSD**
- VF, VZ
- BM, PU, AM
- Diaphragm
- Coil
- 2V
- 2W
- 2W(Big)
- 2P
- 2L
- VX
- PU
- PU225
- 2Q
- JEL5404
- JEL6213
- Pulse
- JELJZF
- 4H
- TSV
- MPV
- 4HV
- HV, K
- 4R
- 4F
- MSV
- JM
- ASC, RE
- QE, QEA
- ST
- HSV



MVSD-260-4E1

MVSD-300-4E1

MVSD-600-4E1

Ordering Code

MVSD	260	4	E2	C	AC110V	W	F
Code	Body Width	4:5 Way	Stop Type		Standard Voltage	Wiring	Joint
	260: 26 mm 300: 30 mm 600: 68 mm		E1: Single coil E2: Double coil	C: Mid-position Closed E: Mid-position exhaust P: Mid-position open	DC12V DC24V AC24V 50Hz/60Hz AC110V 50Hz/60Hz AC220V 50Hz/60Hz AC380V 50Hz/60Hz	Blank: Without light indicator LD: Brown with light indicator LD1: White with light indicator W: Lead wire	1 F-20 F

Specification

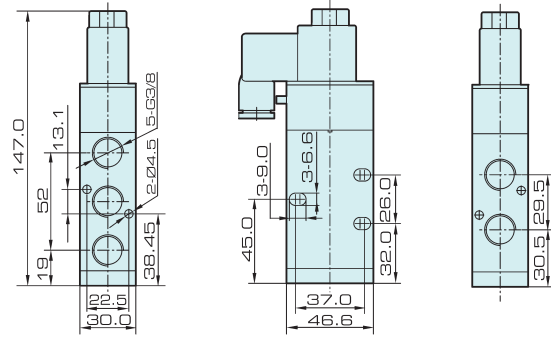
Item	MVSD-260-4E1	MVSD-260-4E2	MVSD-260-4E2 (C.P.E)	MVSD-300-4E1	MVSD-300-E2	MVSD-300-4E2 (C.P.E)	MVSD-600-4E1	MVSD-600-4E2
No. of Position	2	2	3	2	2	3	2	
No. of Port	5			3	5		5	
Port Size	G 1/4"			G 3/8"		G 3/4"	G 1"	
Working medium	Air							
Working Pressure	0.2~0.7 MPa		0.3~0.7 MPa	0.2~0.7 MPa		0.3~0.7 MPa	0.2~0.7 MPa	
Max. Test Pressure	10 kgf/cm ²							
Effective Cross Section Area	18 mm ²		16 mm ²	35 mm ²		25 mm ²	20: 115 mm ² 25: 135 mm ²	
Ambient Temperature	-5 ~ 50°C (No Freezing)							
Power Consumption	AC: 5.5 VA			DC: 4.8 W			AC: 13 VA	DC: 10 W
Operating Voltage Tolerance	± 10%							
Insulation Class	IP 65, F Class							

Overall Dimension

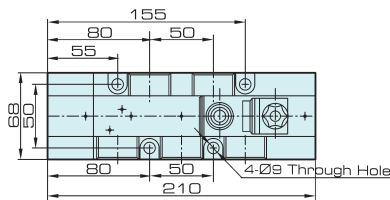
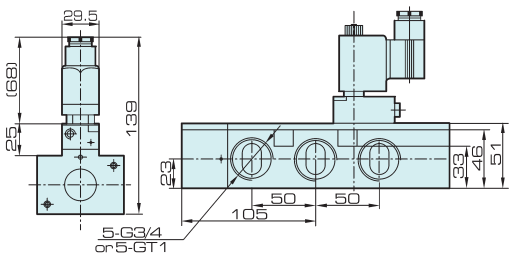
MVSD260-4E1



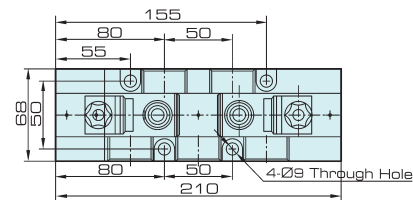
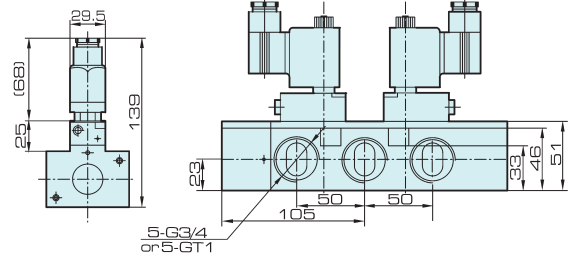
MVSD300-4E1



MVSD600-4E1



MVSD600-4E2



Valve

4V100
4V200
4V300
4V400

Manifold

3V1

JEL

JZF

MVSD

VF, VZ

BM, PU, AM

Diaphragm

Coil

2V

2W

2W(Big)

2P

2L

VX

PU

PU225

2Q

JEL5404

JEL6213

Pulse

JEL, JZF

4H

TSV86

MPV

4HV

HV, K

4R

4F

MSV

JM

ASC, RE

QE, QEA

ST

HSV