

# H2600

Stainless steel  
angle seat valve  
long service fast response



## Application

### Applicable Industries:

Beer, Washing, Disinfection & High temperature killing bacteria, Rubber machinery, Textile printing and dyeing, Pharmacy and medical equipment, Foodstuff processing, Water/ sewage disposal, Filling equipment.

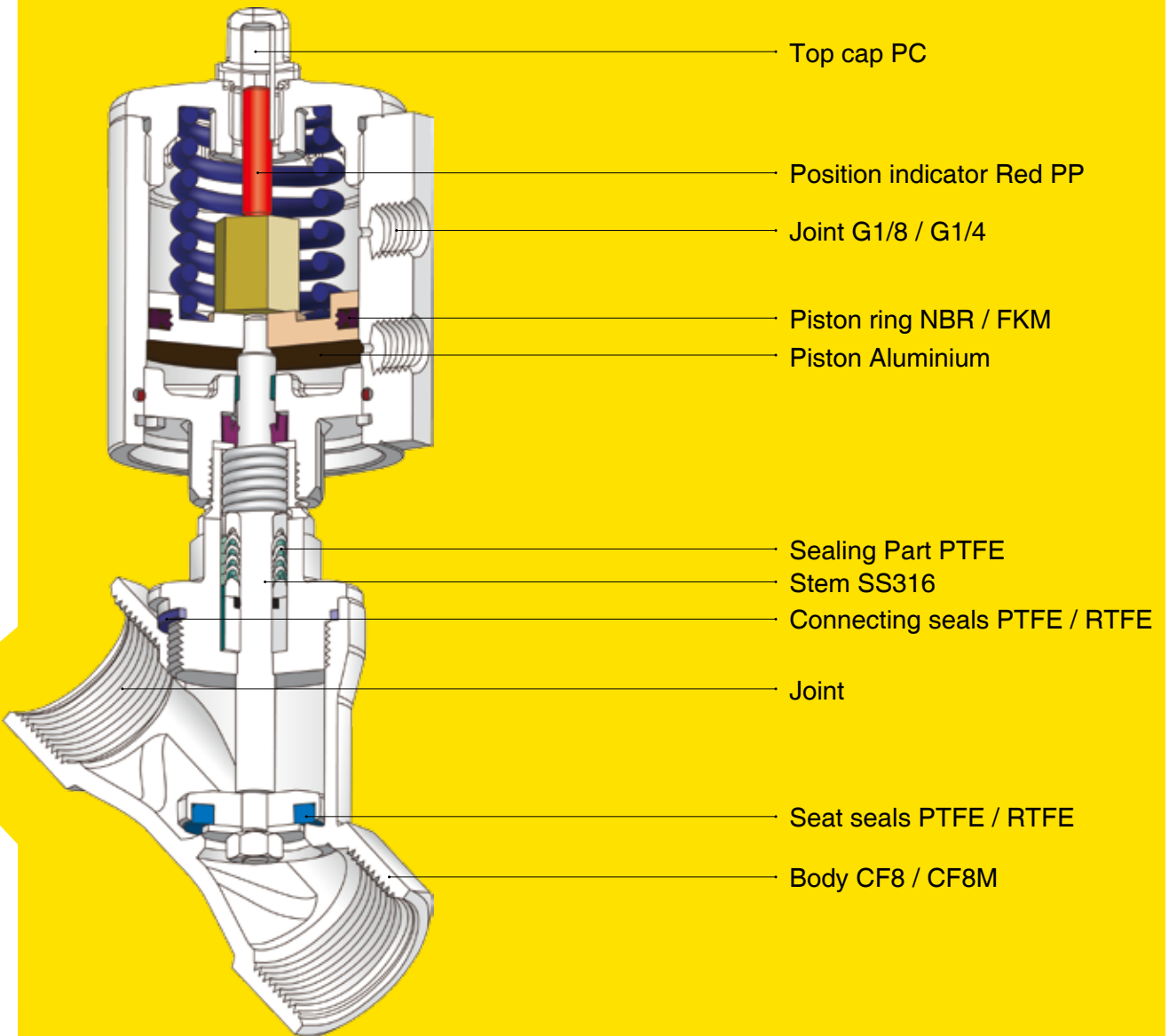
### Applicable Medium:

water, liquid, neutral gas, water steam, slight corrosive gas and liquid.

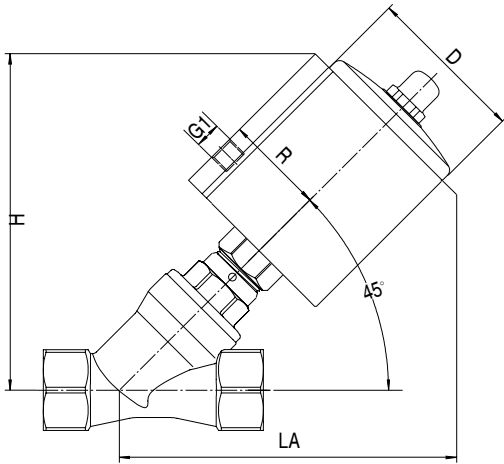
## Technical Data

<b>Joint size:</b>	DN10-DN65
<b>Thread:</b>	BSP, BSPT.NPT, NPTF
<b>Welded:</b>	ISO1127/4200, DIN11850.1, DIN11850.2 DIN11850.3, SMS3008, ASME BPE
<b>Valve body:</b>	CF8/CF8M
<b>Actuator:</b>	Aluminium alloy
<b>Seat seals:</b>	PTFE/RTFE
<b>Stem seals:</b>	PTFE/FKM
<b>Piston seals:</b>	FKM/NBR
<b>Applicable medium:</b>	Water, liquid, neutral gas, Water steam, Slight corrosive gas and liquid
<b>Temperature range:</b>	-10°C to +180°C
<b>Ambient temperature:</b>	-10°C to +60°C
<b>Viscosity:</b>	max 600mm <sup>2</sup> /s
<b>Installation:</b>	Any position
<b>Controlling medium:</b>	Air or neutral gas
<b>Controlling pressure range:</b>	0.3-1Mpa

# H2600



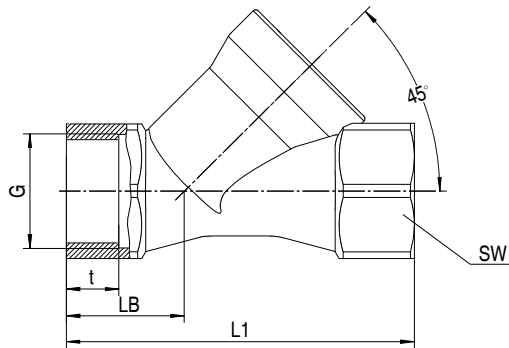
## Installation Dimensions



## Installation size (mm)

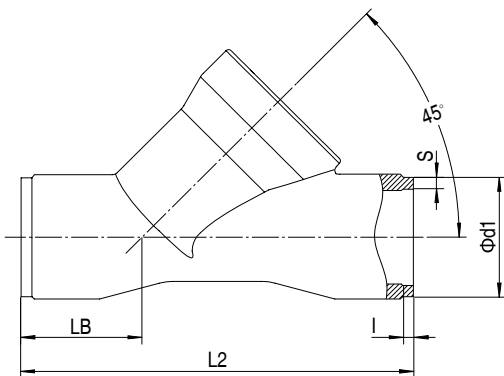
Size	Actuator	D	R	G1	H/LA		
					Thread	ISO1127/4200	DIN11850
DN10	40	50	33	G1/8	115	116	116
	50	61	38	G1/8	127	128	128
DN15	40	50	33	G1/8	115	115	115
	50	61	38	G1/8	127	127	127
DN20	50	61	38	G1/8	130	130	130
DN25	50	61	38	G1/8	136	136	136
	63	75	45	G1/8	158	158	158
DN32	63	75	45	G1/8	167	167	167
	80	94	54	G1/4	185	185	185
DN40	63	75	45	G1/8	174	174	174
	80	94	54	G1/4	192	192	192
	100	115	64	G1/4	212	212	212
DN50	63	75	45	G1/8	185	185	185
	80	94	54	G1/4	203	203	203
	100	115	64	G1/4	222	222	222
DN65	80	94	54	G1/4	224	224	224
	100	115	64	G1/4	244	244	244

## Valve Body Size



## Body size-Thread (mm)

DN	L1	LB	SW		G	BSP	NPT	NPTF	BSPT
			t	s		t	t	t	
10	74	25.5	22	6-kt	3/8"	10	10.6	11.7	10.1
15	74	25.5	25	6-kt	1/2"	11.5	13.8	15.4	13.2
20	84	29	31	6-kt	3/4"	14	14.3	15.9	14.5
25	100	33.5	39	6-kt	1"	15	17	19	16.8
32	112	36	50	8-kt	1-1/4"	18	17.5	19.5	19.1
40	126	41	56	8-kt	1-1/2"	18	17.5	19.5	19.1
50	146	46	68	8-kt	2"	22	18	19.9	23.4
65	196	61	85	8-kt	2-1/2"	25	24	30	26.7



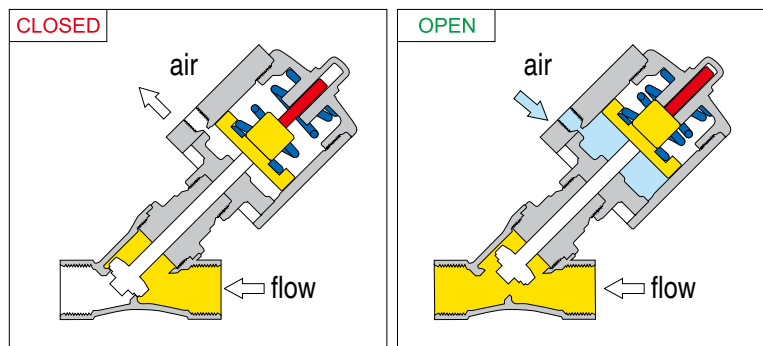
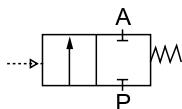
## Body size-Welded (mm)

DN	L2	LB	ISO1127/4200			DIN11850.1			DIN11850.2			DIN11850.3		
			l	phi d1	s	l	phi d1	s	l	phi d1	s	l	phi d1	s
10	70	22	2	17.2	1.6	2	12	1	2	13	1.5	2	14	2
15	88	30	2	21.3	1.6	2	18	1	2	19	1.5	2	20	2
20	92	30	2.5	26.9	1.6	2.5	22	1	2.5	23	1.5	2.5	24	2
25	110	35	3	33.7	2	3	28	1	3	29	1.5	3	30	2
32	126	39	3	42.4	2	3	34	1	3	35	1.5	3	36	2
40	144	46	3	48.3	2	3	40	1	3	41	1.5	3	42	2
50	166	48	3	60.3	2	3	52	1	3	53	1.5	3	54	2
65	208	60	3	76.1	2	-	-	-	3	70	2	-	-	-

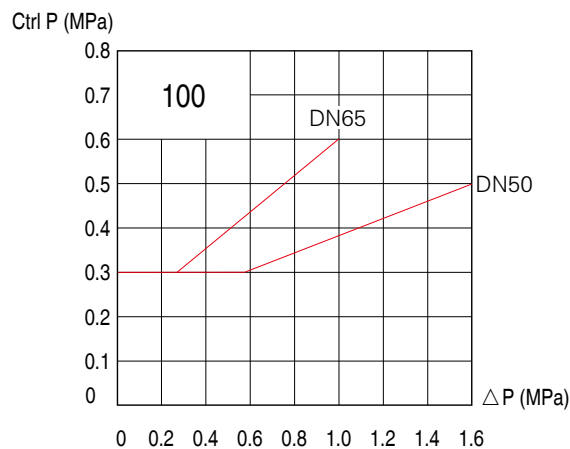
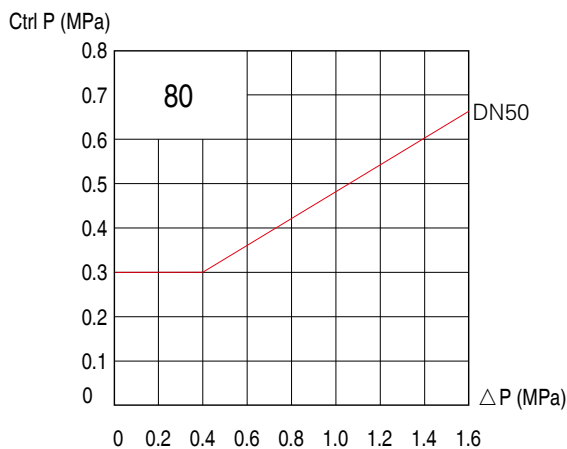
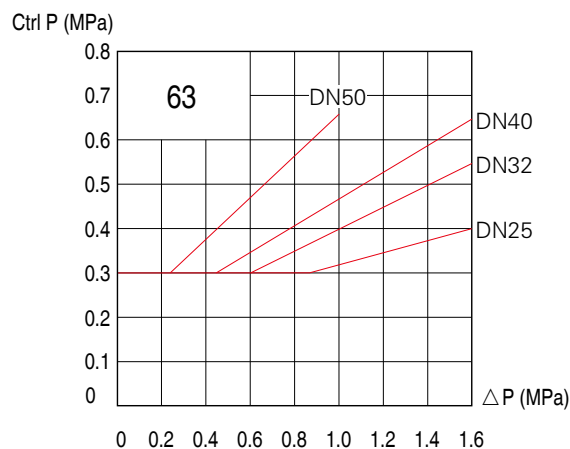
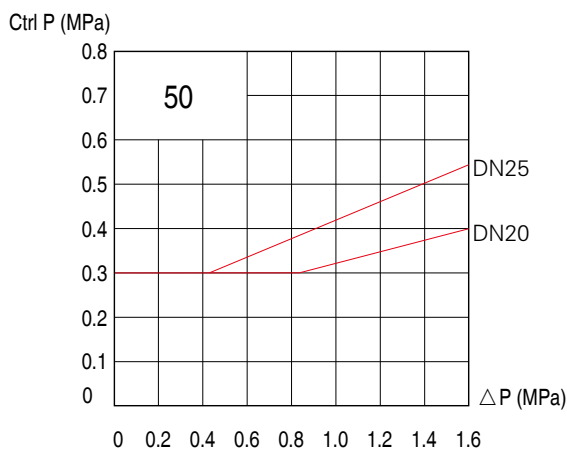
DN	L2	LB	SMS 3008			ASME BPE			The technical data is the same with below sizes of any other welded standard
			l	phi d1	s	l	phi d1	s	
15	70	22	2.5	12	1	2.5	12.7	1.65	DN10
20	88	30	2	18	1	2	19.05	1.65	DN15
25	92	30	2.5	25	1.2	2.5	25.4	1.65	DN20
40	126	39	3	38	1.2	3	38.1	1.65	DN32
50	144	46	3	51	1.2	3	50.8	1.65	DN40
65	166	48	3	63.5	1.6	3	63.5	1.65	DN50
80	208	60	3	76.1	1.6	3	76.2	1.65	DN65

## H2600 Spring return normal close (Normal type)

Normal close with flow direction

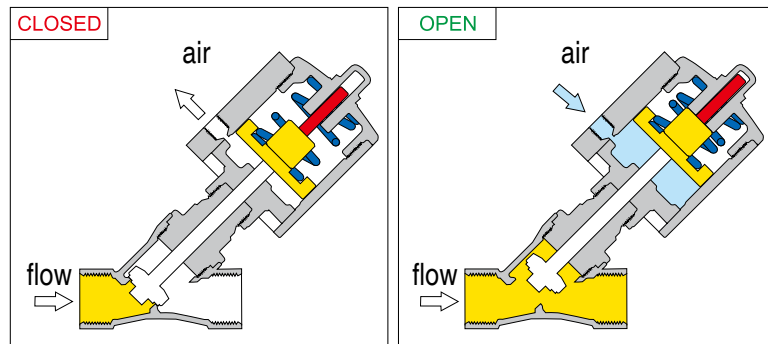
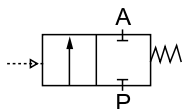


Size	End	Orifice (mm)	Actuator (mm)	Kv (m <sup>3</sup> /h)	Max working pressure at 180°C (Mpa)	Pressure range (Mpa)	Min control pressure (Mpa)
DN10	3/8"	13	50	4.7	1.6	0-1.6	≥ 0.3
DN15	1/2"	13	50	4.7		0-1.6	≥ 0.3
DN20	3/4"	18	50	9.5		0-1.6	0.3-0.4
DN25	1"	24	50	18.1		0-1.6	0.3-0.55
			63	18.1		0-1.6	0.3-0.4
DN32	1-1/4"	31	63	23.1		0-1.6	0.3-0.55
DN40	1-1/2"	35	63	32.9		0-1.6	0.3-0.65
			63	52.8		0-1.0	0.3-0.65
DN50	2"	45	80	52.8		0-1.6	0.3-0.66
			100	52.8		0-1.6	0.3-0.5
DN65	2-1/2"	65	100	82		0-1.0	0.3-0.6



## H2600 Spring return normal close (Anti-water hammer)

Normal close against flow direction



Size	End	Orifice (mm)	Actuator (mm)	Kv (m <sup>3</sup> /h)	Max working pressure at 180°C (Mpa)	Pressure range (Mpa)	Min control pressure (Mpa)
DN10	3/8"	13	50	4.7	1.6	0-1.6	0.45
DN15	1/2"	13	50	4.7		0-1.6	0.45
DN20	3/4"	18	50	9.5		0-1.0	0.45
DN25	1"	24	63	18.1		0-0.8	0.45
DN32	1-1/4"	31	80	23.1		0-1.1	0.4
				32.9		0-0.8	0.4
DN40	1-1/2"	35	100	32.9		0-1.6	0.4
				52.8		0-0.9	0.4
DN50	2"	45	100	52.8	0-0.9	0.4	