

PTH Series

Air Filter Combination



The way to automation

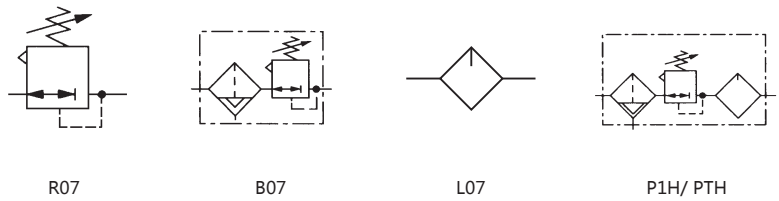
- FRL
- AC, BC
- AFC, BFC
- AF, BF
- AR, BR
- AFR, BFR
- AL, BL
- JAC
- JAF
- JAR
- JAW
- JAL
- PTH
- JAD



Ordering Code

PTH	200
Series	Port Size
R07 series pipe type regulator	100: 1/8"
B07 Series Pipe type filter-regulator	200: 1/4"
L07 micro type lubricator	
P1H/ PTH series filter, regulator and lubricator	

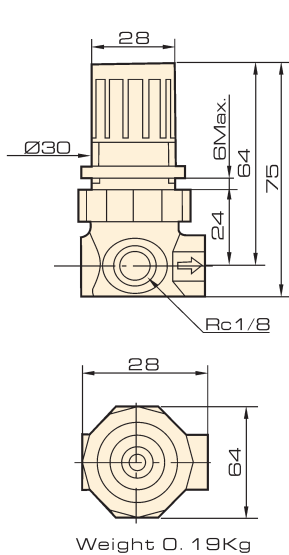
Symbol



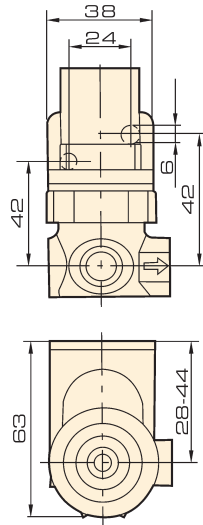
Specification

Model	R07	B07	L07	P1H/PTH
Operating Fluid	Air			
Inlet pressure	0~10 bar	0~10 bar (Transparent cup)	Transparent cup: 6.3 bar	0~10 bar
Pressure gauge port	Rc 1/8			
Ambient temperature	-20~50 °C	Transparent cup: -20~50 °C	-	-
Body material	Aluminium			

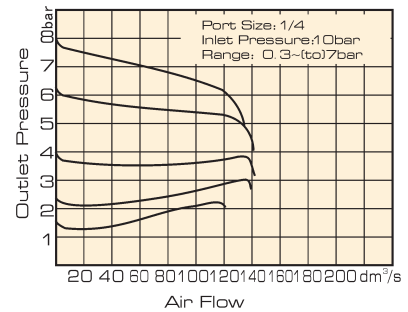
R07 Dimension



Installation bracket



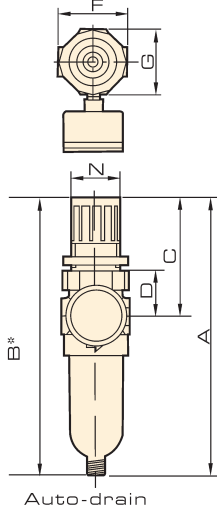
Flow characteristic



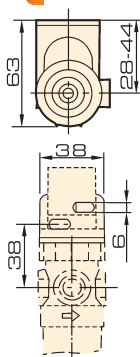
FRL

- AC, BC
- AFC, BFC
- AF, BF
- AR, BR
- AFR, BFR
- AL, BL
- JAC
- JAF
- JAR
- JAW
- JAL
- PTH
- JAD

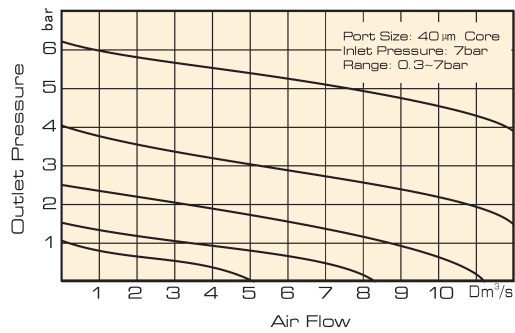
B07 Dimension



Installation bracket



Flow characteristic

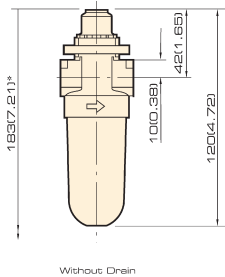


* Minimum clearance required to remove bowl
*1/8 BSP exhausting connector

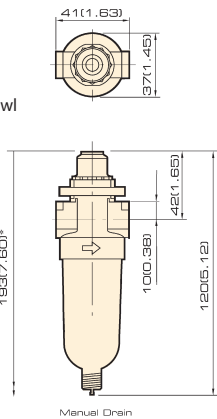
Connector	Automatic	A	B	C	D	F	G	Panel Hole	Panel Thickness	Kg
G1/8, G1/4	Without	160	210	68	28	41	38	30	0~6	0.26
G1/8, G1/4	Manual	164	214	68	28	41	38	30	0~6	0.26

Overall Dimension L07

* Minimum clearance required to remove bowl

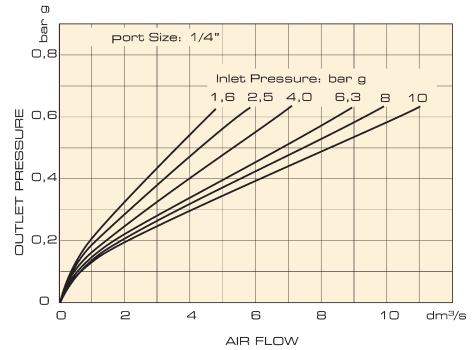


Without Drain

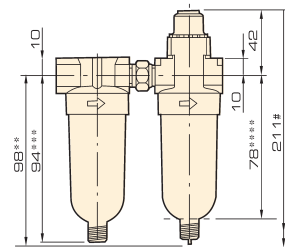
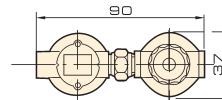
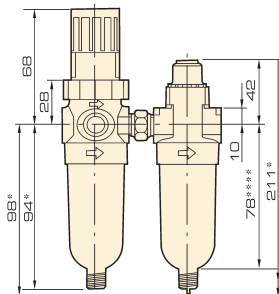
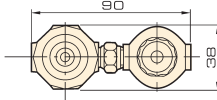


Manual Drain

Flow characteristic



Overall Dimension P1H



PTH Boxed Sets

